

VENTA®

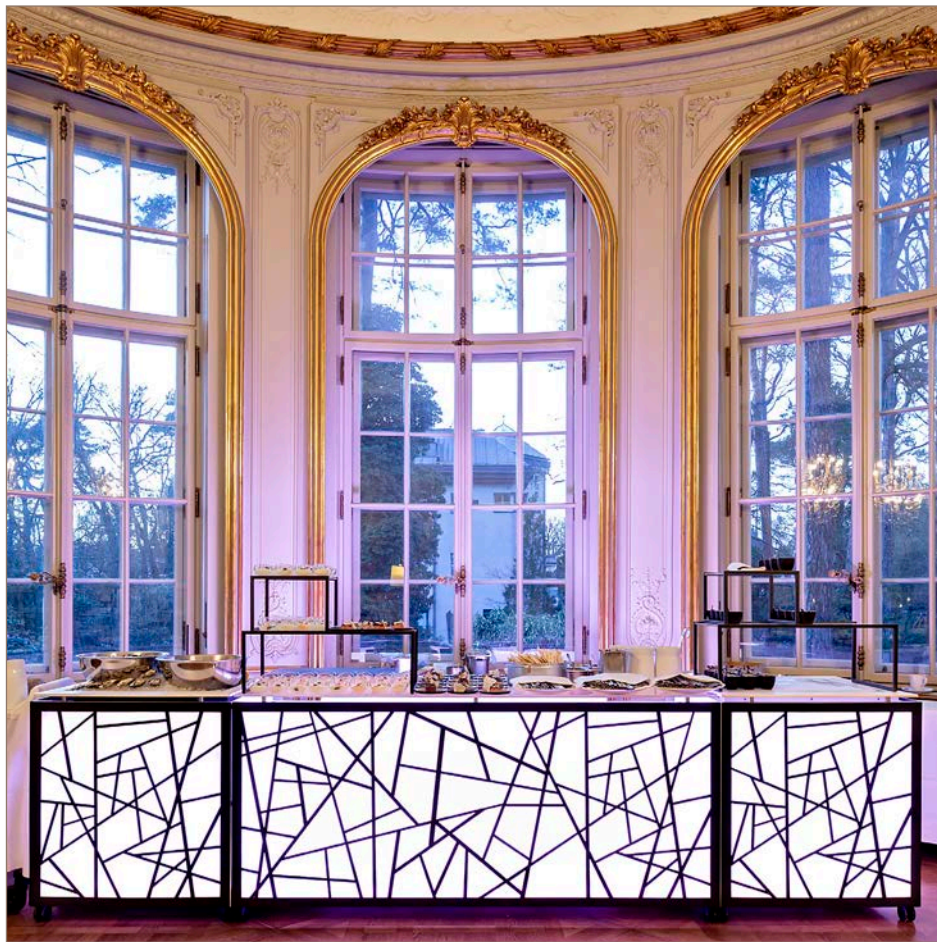
BY BÜCHIN DESIGN



LOOKBOOK

06_08_2019

buffet | STAGE-SYTEM with illuminated blinds

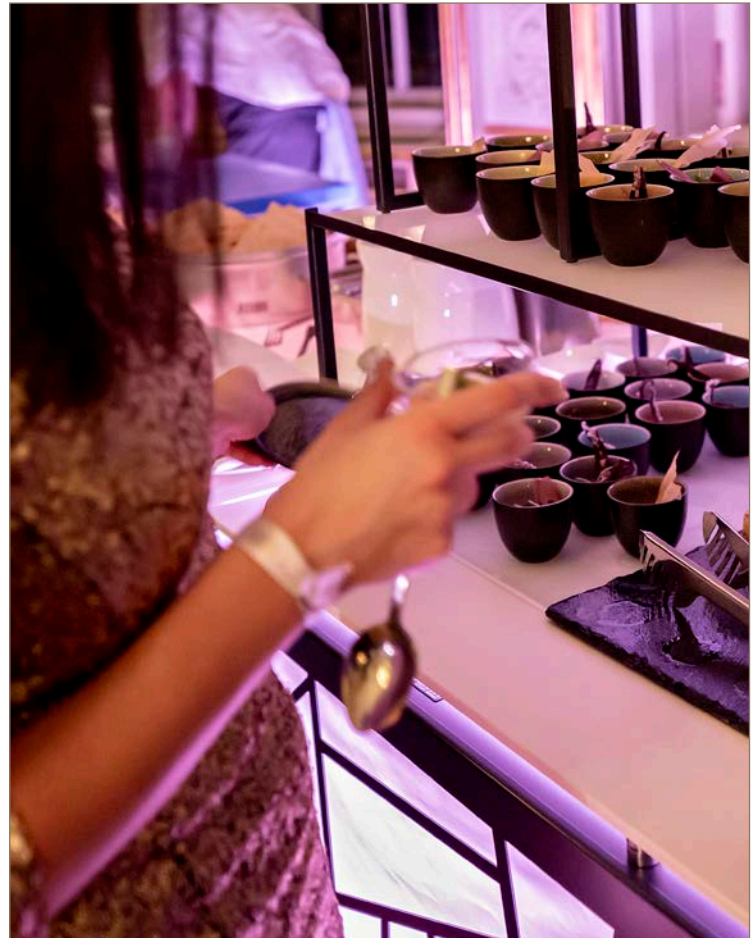


buffet solutions by VENTA

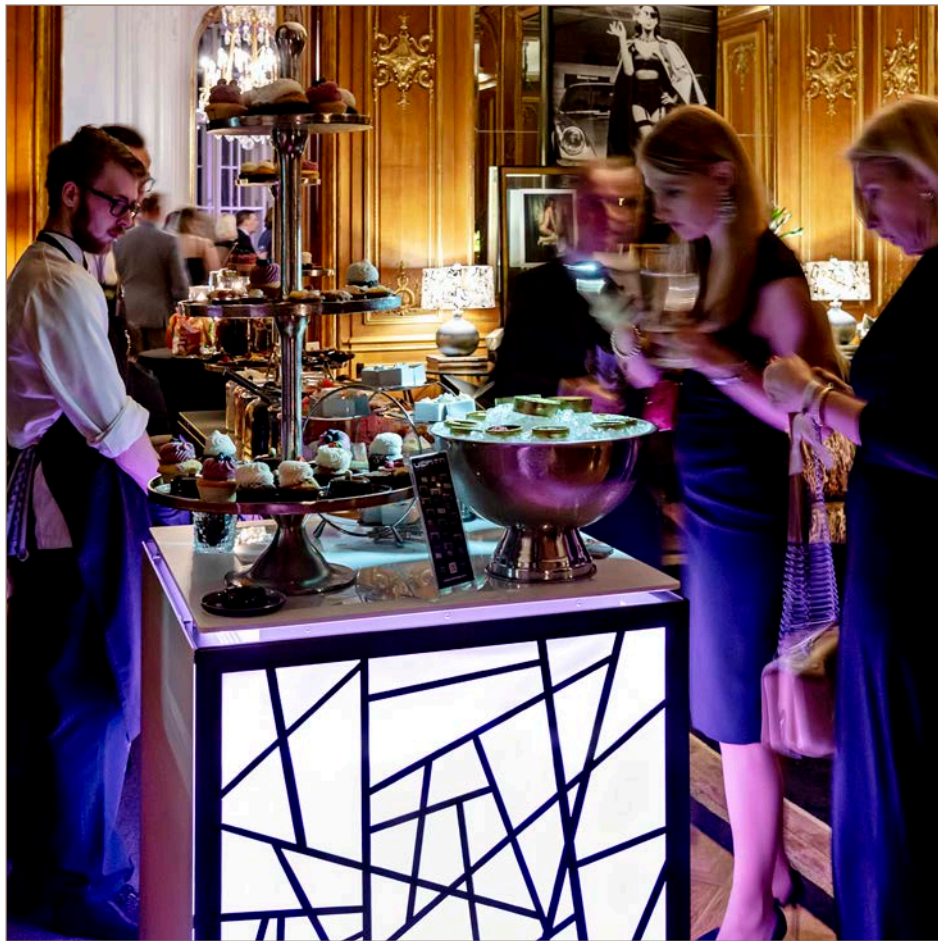


VENTA by büchin design © | 2

buffet | STAGE tables to keep your food cool



buffet | STAGE-SYTEM with illuminated blinds



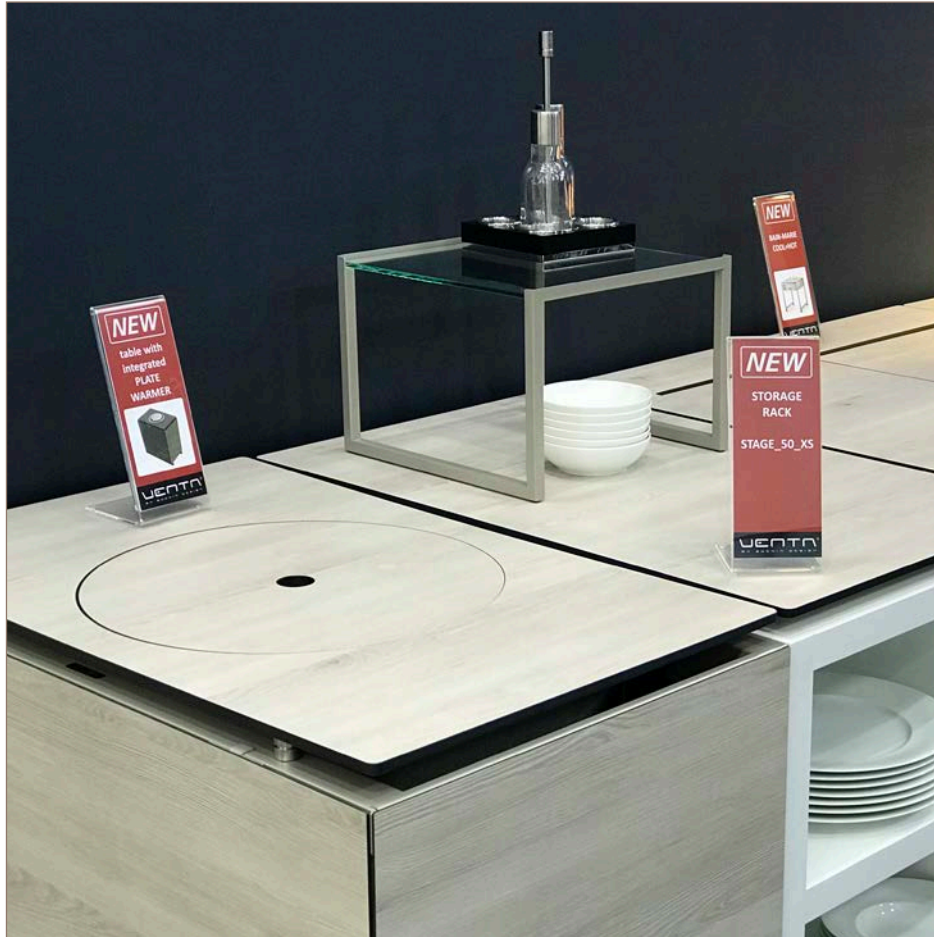
cocktail area | high tables with LED frame (with battery)



coffee break | STAGE system



coffee break | STAGE rack for plates | material: compact laminate white aland pine



morning break | buffet table with table-top in compact laminate



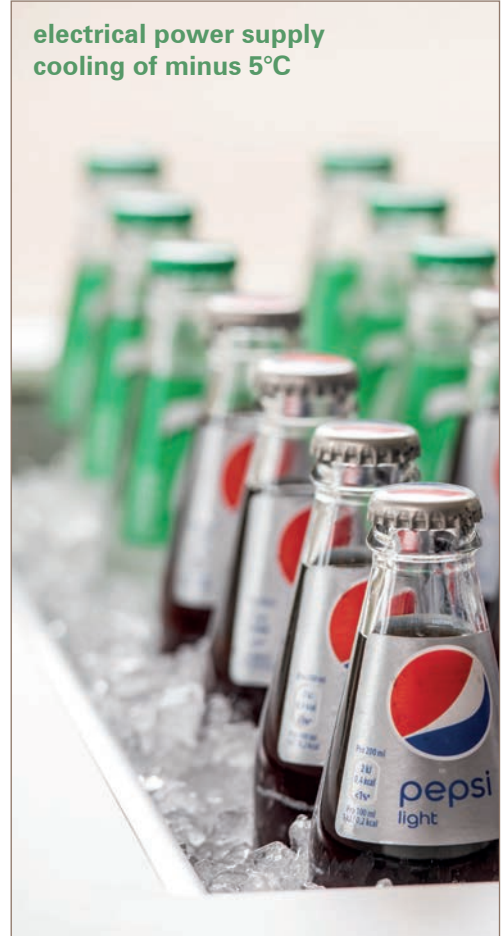
lunch | buffet table with FRONTBLIND decor bamboo



lunch | buffet table STAGE_80_M and STAGE_ETAGERE_M



cool drinks | champagne & white compact laminate



electrical power supply
cooling of minus 5°C

tea time | champagne & glass white colored



VENTA ETAGERE
fitting perfectly to the
buffet table system



afternoon break | VENTA buffet tables - the perfect stage for your food



buffet solutions by VENTA



afternoon break | buffet tables with blinds (compact laminate)



warm buffet | buffet table with invisible induction units inside (keeping the food warm)



warm buffet | buffet table with table-top in compact laminate + BLINDS_BAMBOO



warm buffet | plate warmer covered with compact laminate



coffee break setup | champagne & white



height adjustable buffet-system

all tables on wheels

various length and width

shelf under the table



coffee break setup | champagne & white



cover options for the buffet-system in various colors

compact panel: premium white



dining and party | anthracite & black



STAGE_induction-table +
optional heat bridge from
BEER company

STAGE_COOL+HOT table



dining and party | champagne & white



STAGE_Induction-table
with white glass top and
white cover (compact panel)

buffet setup | anthracite & dark concrete



height adjustable buffet-system

all tables on wheels

various length and width

shelf under the table

frontcover

buffet setup | anthracite & white colored glass-top



INDUCTION-table with
4 x integrated field induction devices
shelf to place plates

buffet-tables | white & white



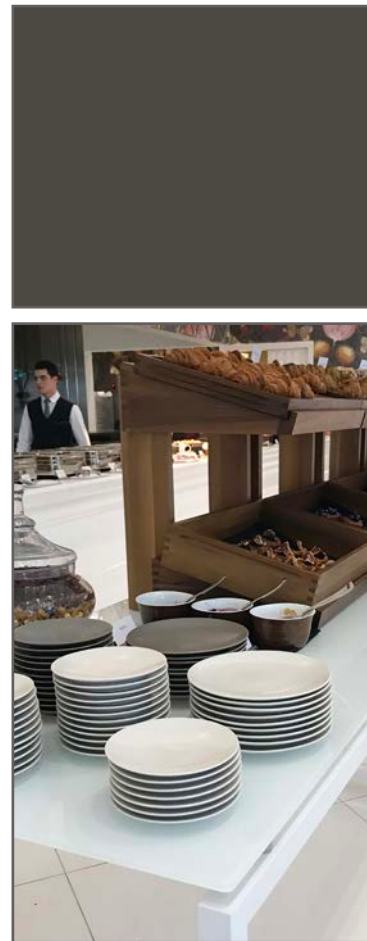
STAGE 80 M
(size: 180 x 80 cm)
with SHELF

frame color: white
table-top: glass, underside
white colored

fruits and cereal | white & white



bakery station | white & white



buffet tables | white & white



breakfast setup | champagne & white



breakfast setup | champagne & white



service cart | anthracite, white & transparent glass-top



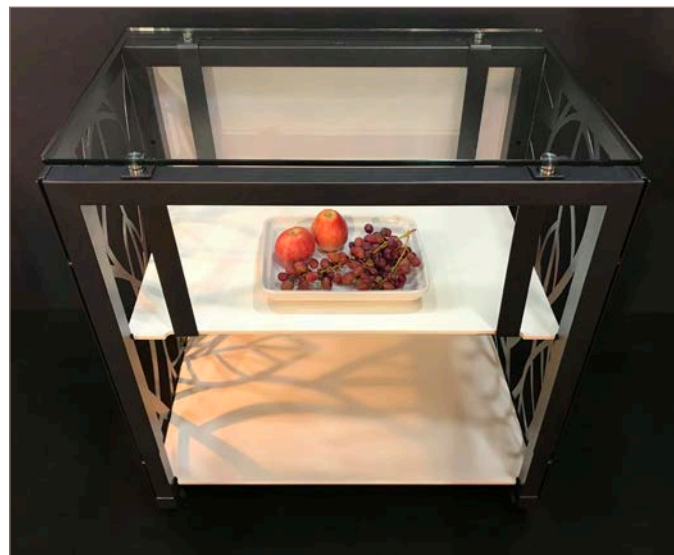
STAGE_50_XS (table)

size: 80 x 50 x 76 cm

SHELF_STAGE_50_XS (lower tray)

SHELF_LOW_STAGE_50_XS (second lower tray)

FRONT- and SIDEBLINDS_LEAF



FRONTBLINDS | ceramic anthracite



FRONTBLINDS
material: compact panel (3 mm)
decor: ceramic anthracite

buffet | anthracite & transparent glass



coffee station



VENTA coffee station
size: 120 x 80 x 92 cm

buffet table with shelf | decoration: FRILICH table-top solutions



bread station

table:
STAGE_80_M
material: steel, anthracite, powder-coated, compact panel, ceramic anthracite

item-no.: 80003100402

deposit for plates:
SHELF_STAGE_80_M
material: steel, anthracite, powder-coated, compact panel, ceramic anthracite

item-no.: 80011100402

buffet table with shelf | decoration: FRILICH table-top solutions



yoghurt station

table:

STAGE_80_M
material: steel, champagne, powder-coated,
glass-top, underside
white colored

item-no.: 80003101303

deposit for plates:

SHELF_STAGE_80_M
material: steel, champagne, powder-coated,
compact panel, premium
white

item-no.: 80011101401

buffet table with shelf | decoration: FRILICH table-top solutions



cereal station

table:

STAGE_80_M
material: steel, champagne, powder-coated,
glass-top, underside white colored

item-no.: 80003101303

deposit for plates:

SHELF_STAGE_80_M
material: steel, champagne, powder-coated,
compact panel, premium white

item-no.: 80011101401

buffet table with shelf | decoration: FRILICH table-top solutions



juice station

table:
STAGE_80_M
material: steel, anthracite, powder-coated, compact panel, ceramic anthracite

item-no.: 80003100402

deposit for plates:
SHELF_STAGE_80_M
material: steel, anthracite, powder-coated, compact panel, ceramic anthracite

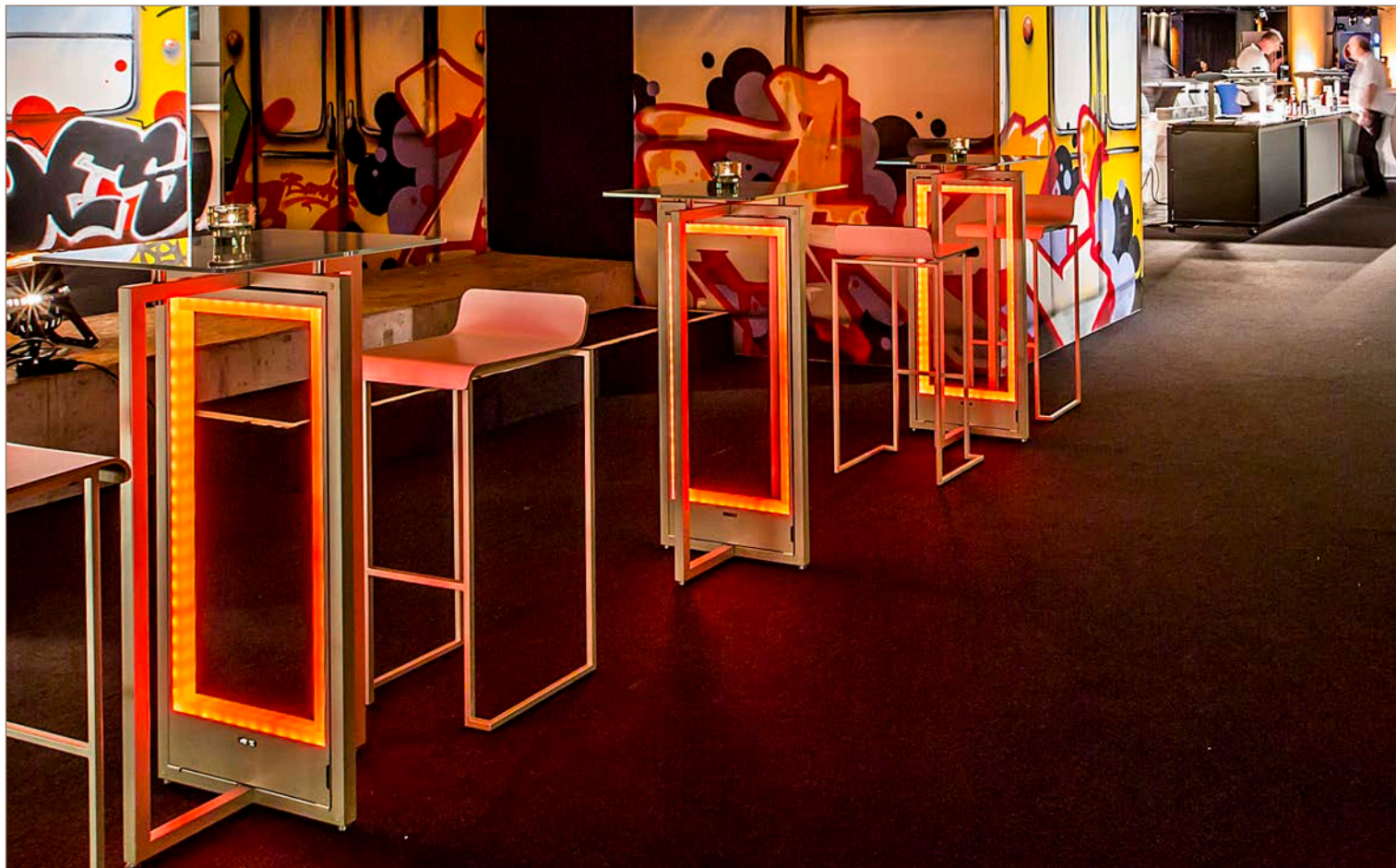
item-no.: 80011100402

party location | tables with LED-frame (rechargeable battery)



SET_70 cocktail-table
with LED-frame
+ PLATE_37 stool

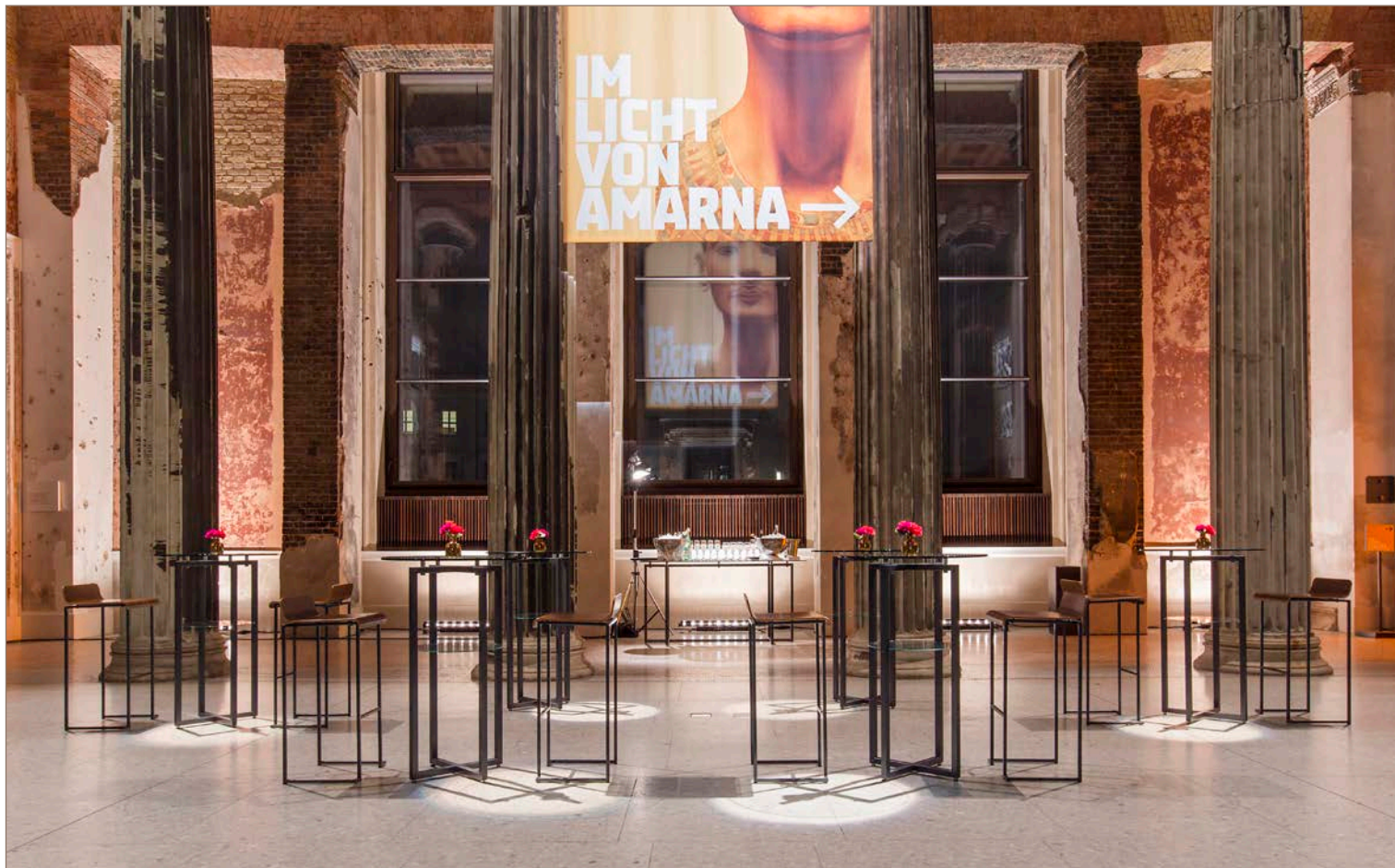
party location | any mood – any colour



welcome at the museum | tables & stools



welcome at the museum | tables & stools



meeting-tables | tables & stools



meeting-tables | tables & stools







buffet | STAGE-SYTEM with cover-element



buffet | STAGE-SYSTEM with cover-element



www.ventadesign.com

visit our showroom:

Büchin Design GmbH & Co. KG | Forckenbeckstr. 9-13 | 14199 Berlin/GERMANY | info@ventadesign.de | phone: +49-30-28045550 | Fax +49-30-2804555-28